

Customer Installation Instructions Randall Ramps – Straight Walkramp & Enclosure

Introduction

Randall Ramps are designed to be installed under a trailer or truck body. This ramp can be installed on any manufacturer's trailer or straight body. This ramp can also be retrofitted into most manufacturers' enclosures.

IMPORTANT: Read this manual completely before installing the ramp. The ramp, enclosure, and optional lift assist are heavy when they are packaged together and could cause serious injury if mishandled or improperly installed.

The installation of the ramp is not difficult if you follow the procedures outlined in this manual. Any unauthorized changes to these procedures, changes to the parts and/or assemblies will automatically void our warranty.

If you have any questions, call Randall Manufacturing at 800-323-7424.

Installation – Tools and Equipment (not included)

Tape Measure
Fork Lift or Jacks
Weld Machine with Flux Core Wire for Galvanized Material
Cold Galvanized Spray

Additional Requirements (not included)

Two Installers
2" x 2" Steel Angle
Undercoat Spray

Note: Installation tools and equipment are not included.

Unpacking

The ramp and lift assist have been palletized inside the enclosure to reduce handling of assemblies during installation.

Remove steel strapping first by cutting the bands.

R/RAMPS

Installation of the Ramp Enclosure

Check all dimensions where you'll be installing the enclosure to the trailer. Inspect enclosure door and body for proper operation before you permanently attach.

16' ramp requires 17'-1- $\frac{3}{4}$ " clearance for length and 10', 12' & 14' ramps require 15'-1- $\frac{3}{4}$ ". If you have a smaller size ramp, please call Randall for instructions.

You'll also need 26- $\frac{3}{4}$ " width clearance and 5- $\frac{5}{16}$ " height clearance. The clearance needed at the enclosure door end will be 27- $\frac{1}{2}$ " wide and 7- $\frac{3}{8}$ " high.

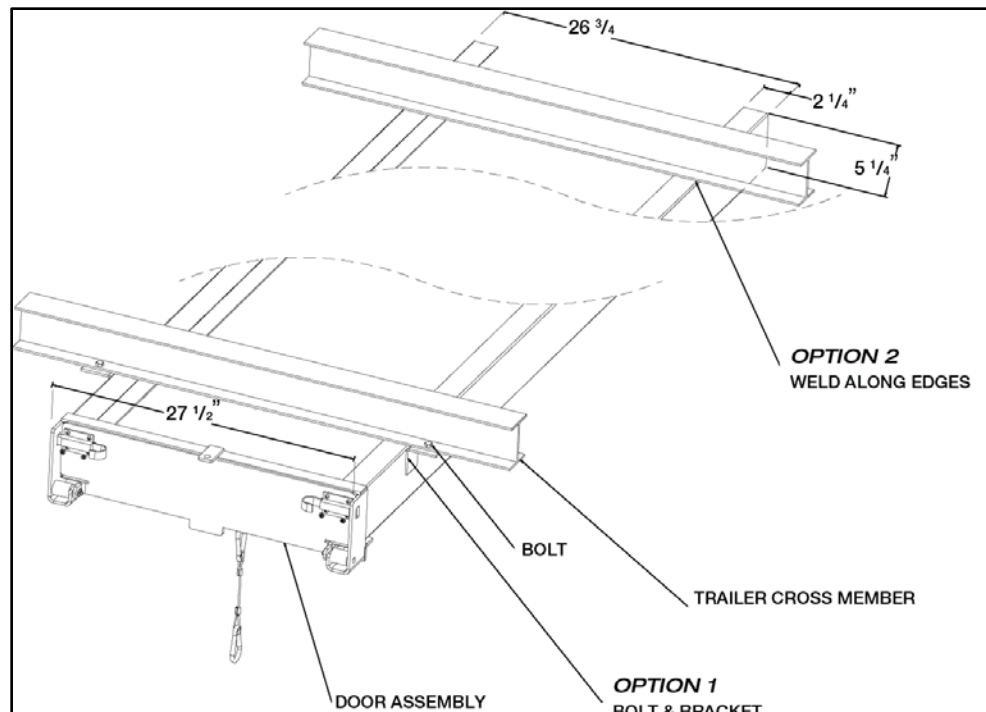
Place enclosure in the opening. The enclosure must be recessed $\frac{1}{2}$ " so the enclosure won't get damaged when the trailer is backing up to a dock. Do not recess enclosure more than 3" as this will cause interference with the handling of the ramp.

Attach enclosure to under body of trailer cross members every 36" at minimum on both sides of enclosure.

Trailers made with aluminum cross members will need to have steel 2" x 2" angles welded to the enclosure and then bolted to the cross members of the trailer. (See Option 1)

Trailers with steel cross member can have the enclosure welded directly to them. (See Option 2).

Place or stow ramp in enclosure with apron toward the front.

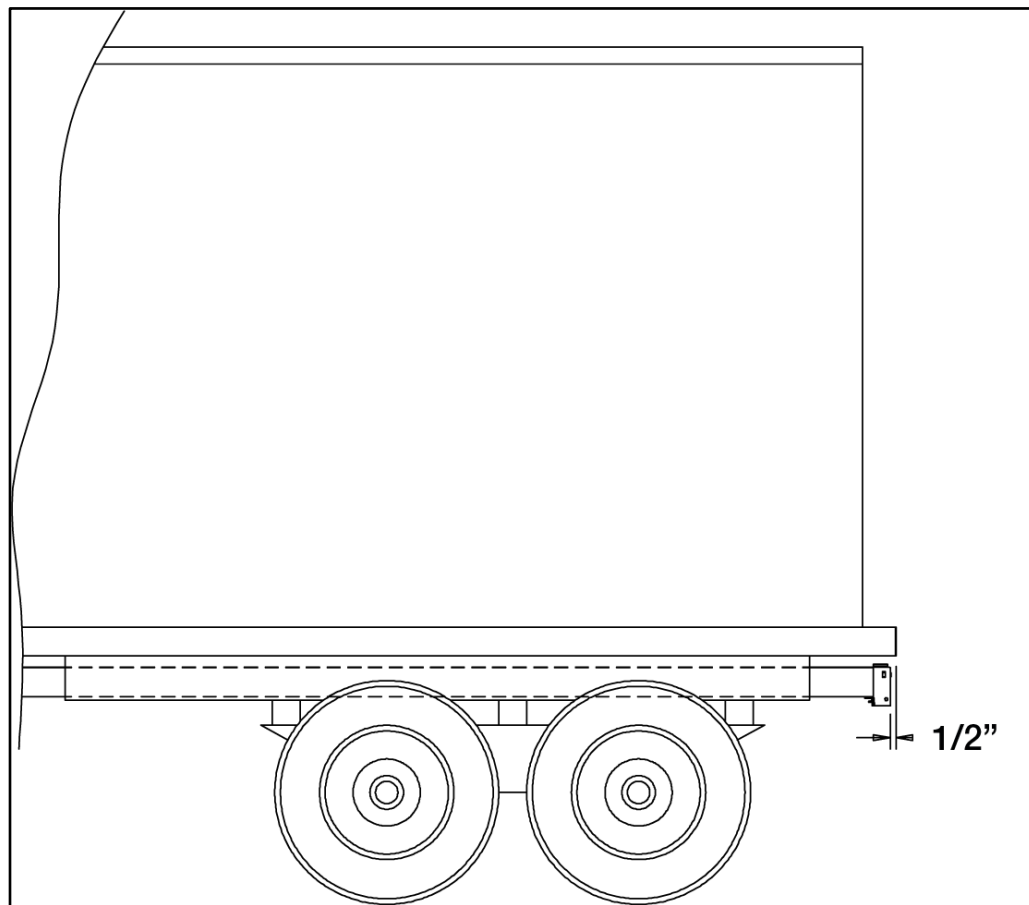


R/RAMPS

Note: If you have a ramp that has a lift assist you must first remove the wire ties from the lift assist. Remove the ramp from the enclosure and place ramp and lift assist on the ground with the lift assist contacting the ground. Next, remove the wire ties and start raising the ramp slowly by the apron end. Lastly, place the ramp into the enclosure by lifting the ramp by the lift assist frame assembly over the stop bracket in front of the enclosure.

This illustration (below) is only a point of reference for installation purposes. Figure 1 shows the location of the major components of the ramp for a typical installation.

Figure 1



RANDALL RAMPS – Straight Walkramp Installation Instructions

Your Randall walkramp comes with pre-installed apron bolts. These apron bolts are used to anchor the ramp to the trailer floor. Your apron bolts come pre-installed with a spacing of 13 ½” apart. (See Figure 2). The bolts can be relocated if you have pre-existing holes in your trailer floor.

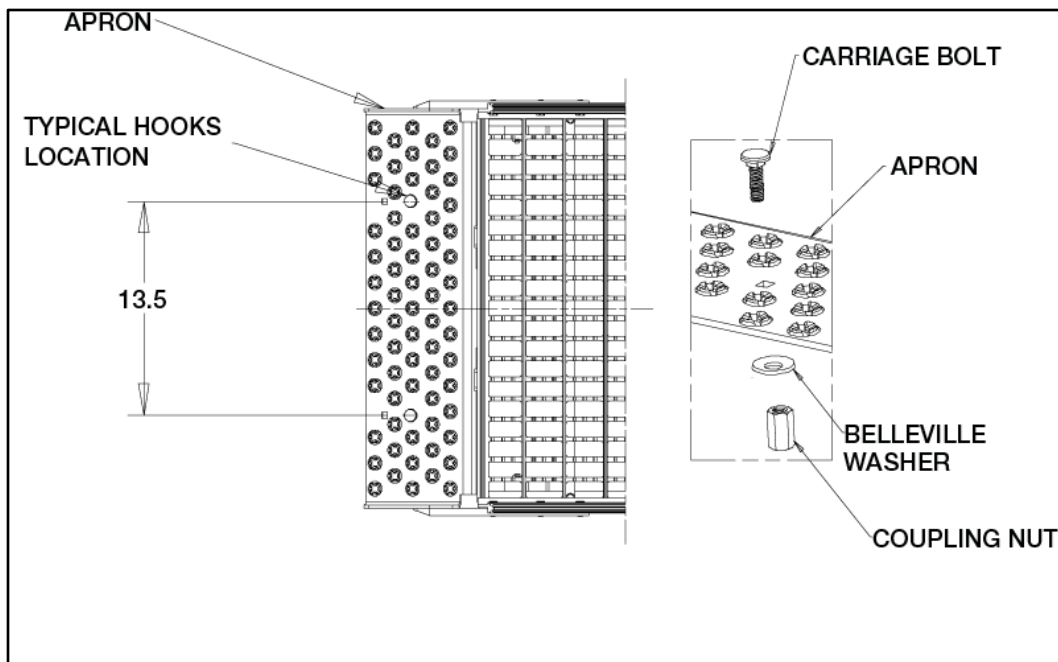
Changing Apron Bolt Location

The bottom of the coupling nut must be at least 3” back from the front edge of apron so that the bolt does not drag in the enclosure. (See Figure 3).

Remove coupling nut and carriage bolt from apron using a 5/8” wrench.

Select new hole location and re-install the bolts make sure to use Blue #242 Loctite on the carriage bolt before tightening (Loctite not included). Tighten down the carriage bolt so the carriage bolt is tight against the apron plate. Must be torqued to 500-510 in/lbs (See Figure 2).

Figure 2

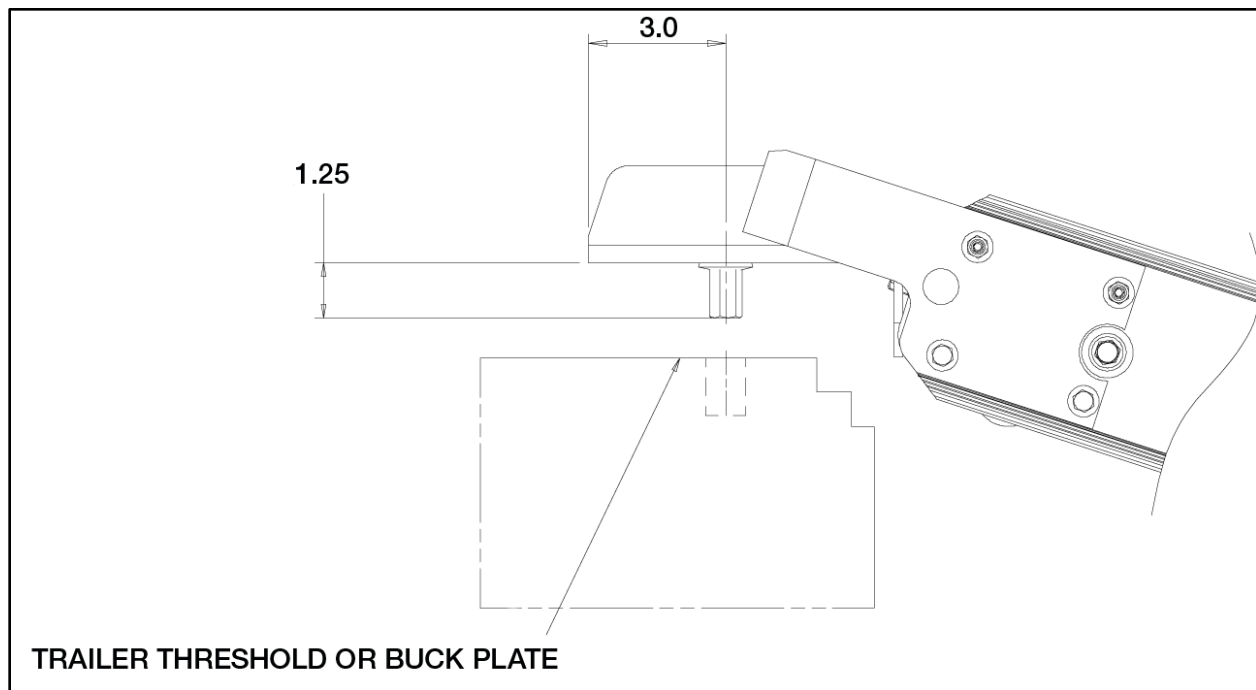


If Trailer Doesn't Have Receiving Holes

Using your apron bolts as a template mark your receiving holes.
Drill 7/8" hole where marked.
Place apron bolts inside hole to insure the Ramp is secure.

Note: If your trailer uses bracket attached to the buck plate or uses holes in the buck plate, you'll need an apron for a lift assist. (See Figure 4A).

Figure 3



Positioning and Repositioning Apron Hooks and Brackets

Determine where the brackets will be welded to then weld the brackets to the buck plate or trailer threshold.

Note: Holes can be cut into the trailer's buck plate or threshold instead of using brackets.

Remove coupling nut using a 5/8" wrench.

Put coupling nut and hook in new location and tighten. (Torque to 500-510 in/lbs) Remember to use Blue # 242 Loctite. Remember: hooks must be 3-1/2" away from the edge of the apron if you are using a lift assist (see figure 4B)

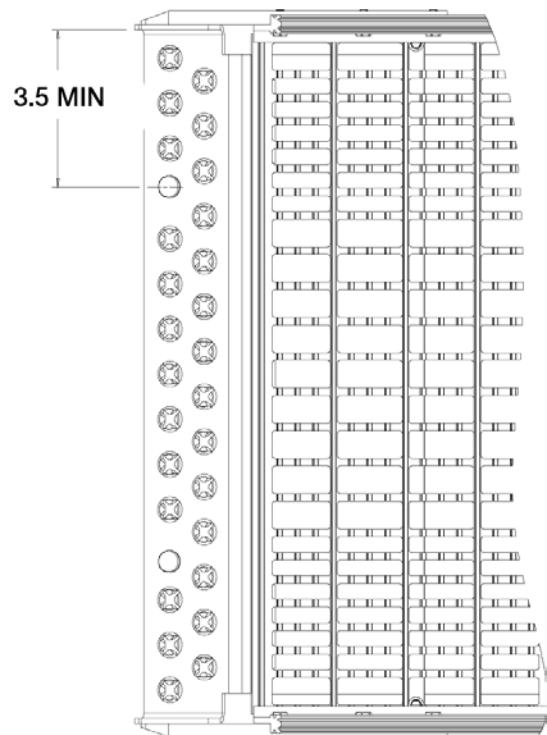
Place hooks into holes or brackets to insure that the ramp is secure.

Your Randall Ramp System is now ready to be used. If you have any questions or any problems, please call Randall Manufacturing at 800-323-7424.

Figure 4a



Figure 4b



R/RAMPS

Notes:

Randall Ramps
www.randallramps.com

**Patent Pending. Randall Ramps is a product line of Randall Manufacturing.
Call 800-323-7424 for more information.**